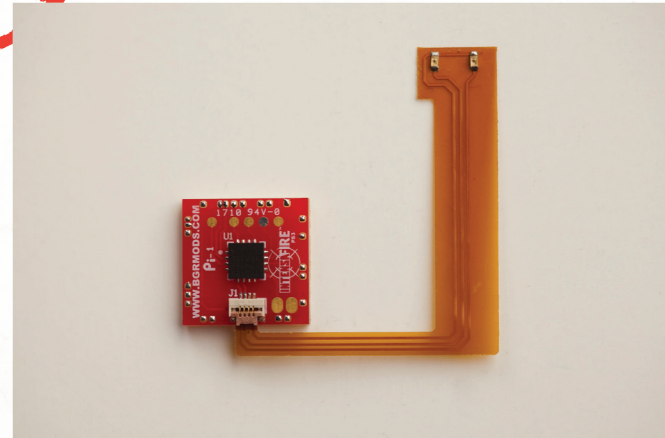


INTENSAFIRE™ PS3



INSTALLATION

ONLY WORKS ON PS3 DUAL SHOCK 3 CONTROLLERS

(including all colors)

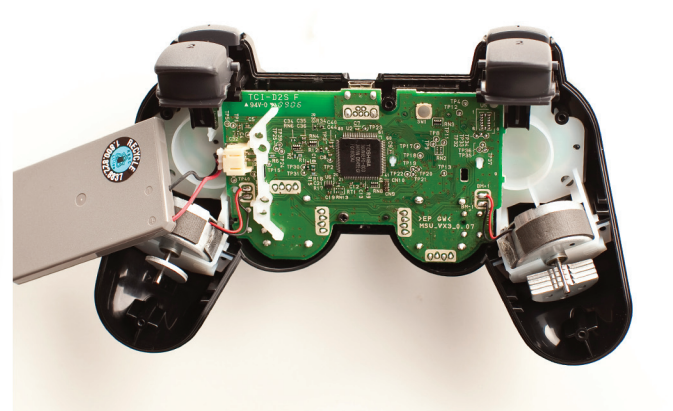
CECHZC2U / model # 98050 / 3-295-244-02

NOT 3-295-244-01

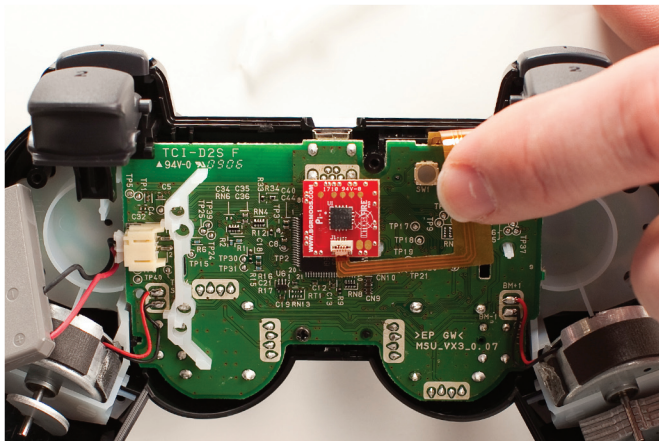




1. Open your controller
 - A. Take the 5 screws out of the bottom of the controller
 - B. Remove the bottom of the controller with the joysticks facing down.

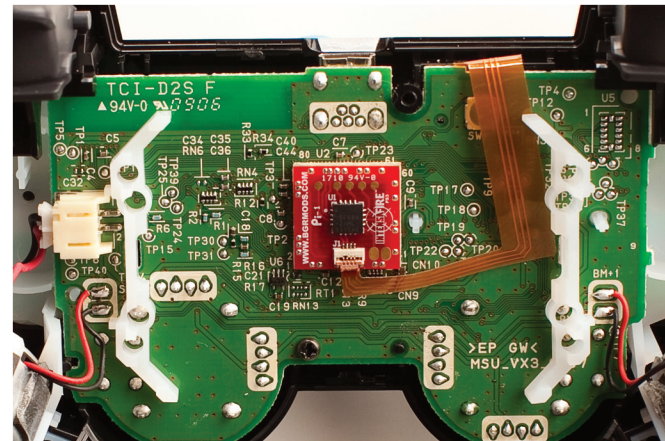


- C. Snap out the right white plastic clip that holds the battery.



2. Install IntensaFIRE

- A. Take the IntensaFIRE and tuck the LEDs under the mother board by player 3 & 4.



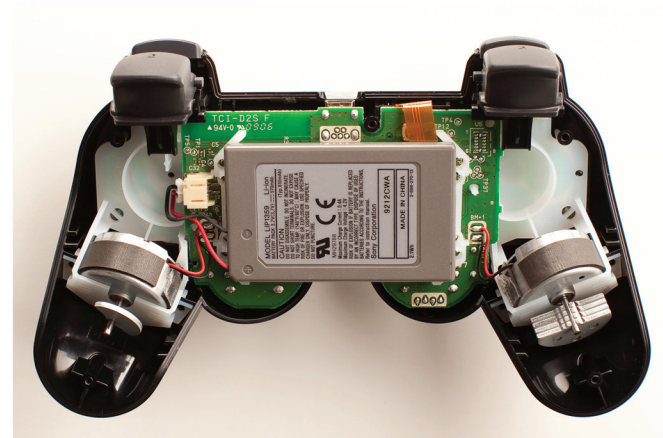
- B. Once in fold the Flexboard Down on to the motherboard.



3. Close your controller

- A. Re-install the white Plastic clip over the Flexboard.
- B. With the back of the controller facing you remove the double sided tape in the IntensaFIRE and place it on the current IC Chip.

DO NOT TWIST THE INTENSAFIRE ON THE IC CHIP-THIS WILL BEND PINS.



- C. Put the battery back over the IntensaFIRE.
- D. Screw back together the controller